

FOLDING DOOR HARDWARE (Door Weight 88 lbs per door)

SDR-A84D

SLIDING & FOLDING DOOR HARDWARE

FOLDING DOOR HARDWARE (DOOR WEIGHT 88 LBS PER DOOR)



Type	SDR-A84D	
	Folding Door	
Roller	Top Recessed	
Track Mounting	Ceiling	
Door Weight	Max. 88 lbs (40 kg) Per Panel	
Door Thickness	1-3/8"(35 mm) ~ 2" (50 mm)	
Door Panel Width	Min. 21-1/32"(550 mm)	
Door Width	Two Doors: Max. 39-3/8" (1000 mm)	Four Doors: Max. 29-1/2" (750 mm)

- 88 lbs per panel capacity
- Compatible with 2 or 4 doors
- Ceiling mount options
- Recessed Mounted door brackets
- Concealed Hinges Recommended
- Double rollers with ball bearings
- Quiet precision movement
- Low profile minimum gap of 3/16" (5 mm)
- Recess Mount
- Optional bottom track (not required)

How to order

1. Select track and track length
 - 1A. Select any optional parts for track
2. Select a hardware set
 - 2A. Select any optional parts for hardware set

1. Track Options

Track Type	Length	Item No.	Description	1A Optional Parts for Track
Standard Aluminum Track	78-3/4" (2000 mm)	SDR-A84D-2000		<p>SDR-A-4131 Bottom Guide Channel</p> <p>SDR-A-4110 Bottom Guide Roller</p>
	118-1/8" (3000 mm)	SDR-A84D-3000		
False Ceiling Aluminum Track	118-1/8" (3000 mm)	SDR-A84D-TC-3000		

2. Hardware Set

Door Mount	Load Rating Per Door	Item No.	Set Details
Two Door Assembly	Up to 66 lbs	SDR-A84D-2D-2HDC	<p>(1) Set for (1) Pair of Doors</p> <p>(2) HES3D-120DC</p>
	Up to 88 lbs	SDR-A84D-2D-3HDC	<p>(1) Set for (1) Pair of Doors</p> <p>(3) HES3D-120DC</p>
Four Door Assembly	Up to 66 lbs	SDR-A84D-4D-4HDC	<p>(1) Set for (1) Pair of Doors</p> <p>(6) HES3D-120DC</p>
	Up to 88 lbs	SDR-A84D-4D-6HDC	<p>(1) SDR-A84D-8802 Set for SECOND Pair of Doors</p> <p>(9) HES3D-120DC</p>

2A Optional Parts for Hardware Set

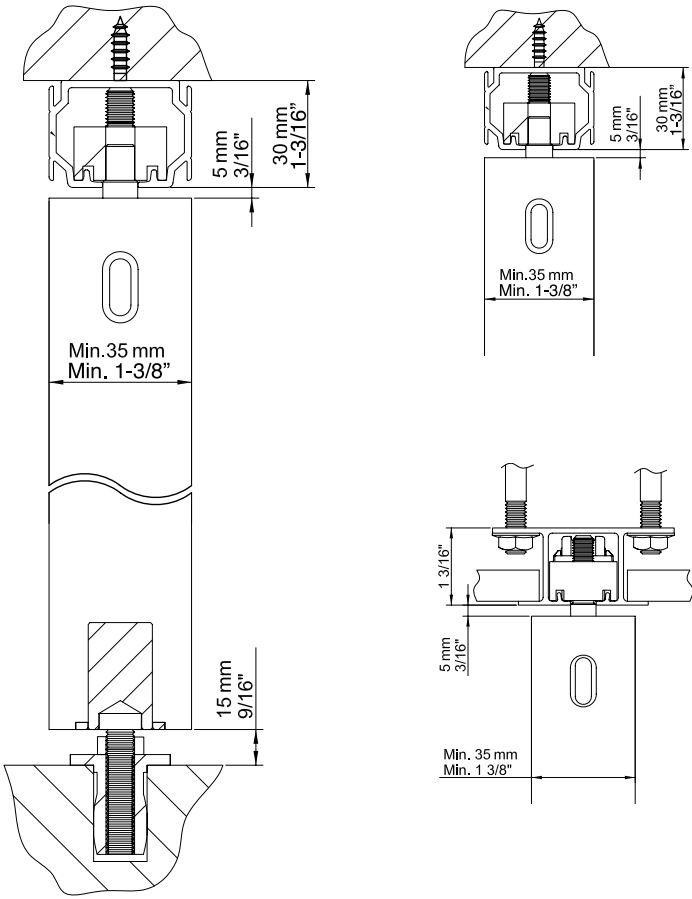
<p>SDR-A84D-8800 Set for Pair of Doors</p>	<p>SDR-A84D-8801 Set for Single Door</p>	<p>SDR-A84D-8802 Set for SECOND PAIR of Doors</p>
--	--	---

* As necessary, can be used with knuckle hinges etc..

TRACK MOUNTING OPTIONS

SLIDING & FOLDING
DOOR HARDWARE

FOLDING DOOR HARDWARE (DOOR WEIGHT 88 LBS PER DOOR)



Ceiling Mount
Standard ceiling mount for doorways and closets. Requires 1-3/8" thick doors.

False Ceiling Mount
False ceiling mount for room partition applications. Requires 1-3/8" minimum thick doors. Hardware for sliding doors is completely concealed.

■ Configuration Options

