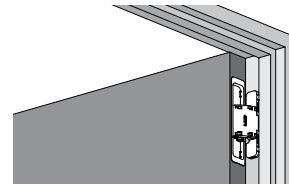


# HES2S-140-A125

SURFACE MOUNTED CONCEALED HINGE

## Installation Manual



Thank you for using our product. Before installation, please read this manual thoroughly to ensure correct installation. Please keep this manual handy for future reference.

### ABOUT THE PRODUCT

- Surface mount on the door frame enables easy installation (no frame side mortising).
- Allows vertical, horizontal and depth adjustment.
- The opening angle is 125°.
- Durability: successfully passed 300,000 open/close private cycles.

### DOOR SPECIFICATION

Min. Door thickness	1-1/2" (38 mm)
Max. Door weight	110 lbs (50 kg)/ 2 hinges 143 lbs (65 kg)/ 3 hinges
Max. Door size	Width: 35-7/16" (900 mm) Height: 106-5/16" (2700 mm)

The required quantity of hinges depends on the stiffness and curvature of the door. Install the door and check to determine the appropriate amount of hinges.

### FOR YOUR SAFETY AND CORRECT INSTALLATION

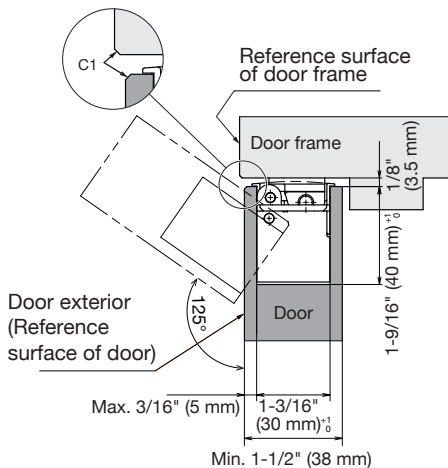
#### Meaning of symbols

	Warning Caution		Prohibited		Required
--	-----------------	--	------------	--	----------

#### **Caution:** If not followed, injury or damage may result.

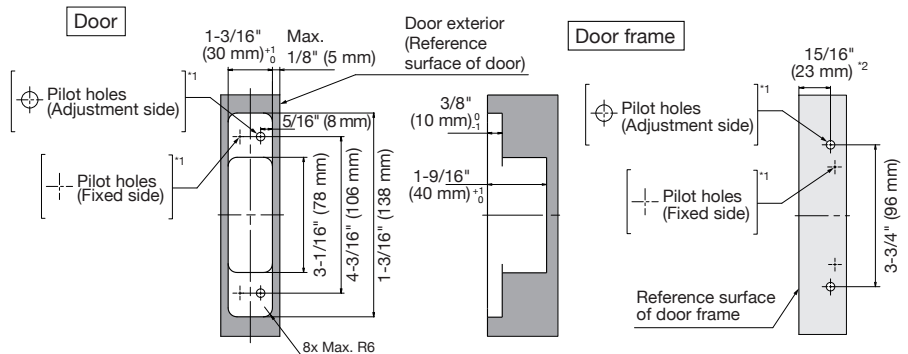
- ❗ Install on a door frame that can withstand the weight and impact of opening and closing the door. Be sure to use the provided screws and tighten them securely. If the mounting strength is insufficient, the door may malfunction and cause injury.
- ⊘ Do not use this product for any other purpose, or with doors that are outside the specifications of this manual.
- ❗ If using a door closer, certain types may cause the door to not close properly or cause damage. Please check the compatibility of the closer before use.
- ❗ Follow the specified dimensions, specifications, and alignment of the door and frame. Warping, tilting or twisting of the frame or door may cause operation failure.
- ❗ This product is a part for architectural fittings. After installation, please check the function and safety of the final product. Please inform the end user how to use the product safely.
- ❗ Make sure to check the screws for slack at regular intervals (one month from first usage, half a year, and then one time every year is recommended).
- ❗ A door stopper must be installed to assure open position does not exceed 125°. Failure to do so will result in damage or breaking of the hinges, and the door may fall.

### INSTALLATION DRAWING (EXAMPLE)



Left-hand opening shown. The right-handed opening is symmetrical.

### CUT OUT DRAWING FOR DOOR AND DOOR FRAME



\*1 The diameter and depth of the pilot hole depends on the strength of the timber. Drill pilot holes before installing hinges. The position of the screw on the fixed side depends on the adjusted position of the hinge.

\*2 The value when the machining allowance is 5mm.

## COMPONENT PARTS (PER BOX)

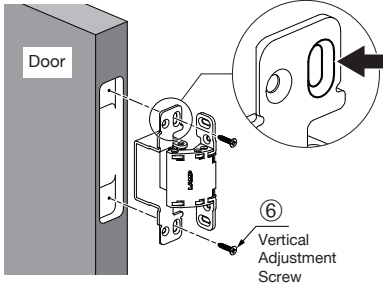
Parts	① Body	② Cover		③ Distance Plate	④ Adjustment Plate	⑤ Template	⑥ Countersunk head tapping screw 4x20
		Door side	Door frame side				
Quantity	2	2	2	2	2	1	16

## INSTALLATION PROCEDURE

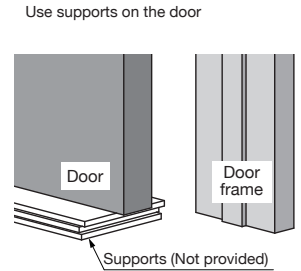
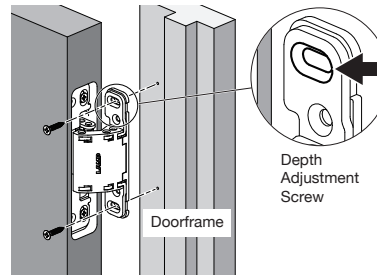
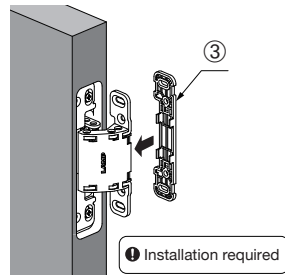
Left-hand opening shown. The right-handed opening is symmetrical.

### 1 Hinge Installation

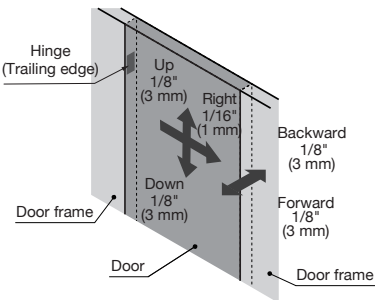
#### • Installing Hinge to Door



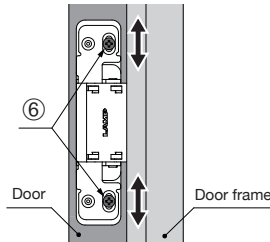
#### • Installing Hinge to Door frame



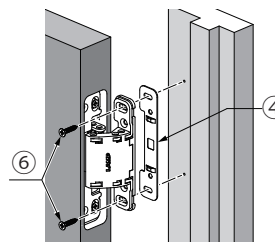
### 2 Adjusting Door Position



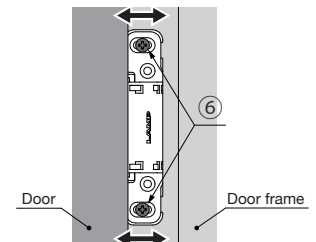
#### • Vertical adjustment 1/8" (±3 mm)



#### • Horizontal adjustment 1/16" (+1 mm)



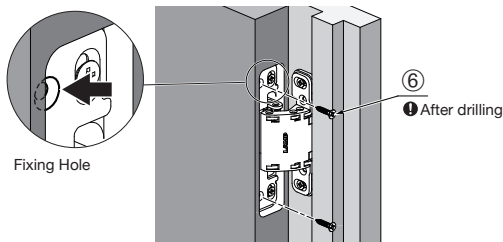
#### • Depth adjustment 1/8" (±3 mm)



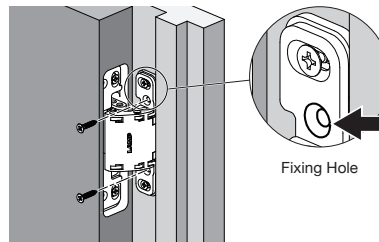
### 3 Hinge Installation

After adjustments are finished, fasten fixing screws to complete installation. Please note: Vertical and depth adjustments will not be possible after this step.

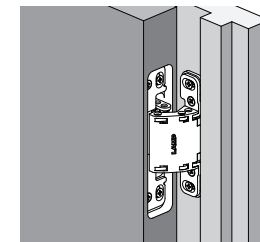
#### • Door side



#### • Door frame side

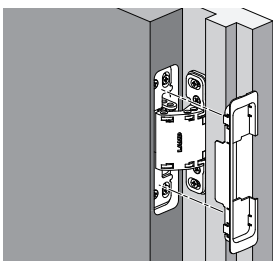


#### Hanging completed

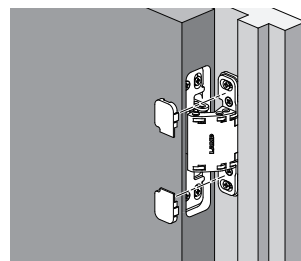


## COVER INSTALLATION

#### • Door side



#### • Door frame side



#### Installation completed

